

# Dosing guide

## **Includes recommendations on:**

- Dosing and dose strengths
- Dose reduction and dose modifications for adverse reactions
- Patient counseling information

## **Indication**

Itovebi (inavalisib), in combination with palbociclib and fulvestrant, is indicated for the treatment of adults with endocrine-resistant, *PIK3CA*-mutated, hormone receptor (HR)-positive, human epidermal growth-factor receptor 2 (HER2)-negative, locally advanced or metastatic breast cancer, as detected by an FDA-approved test, following recurrence on or after completing adjuvant endocrine therapy.

## **Important Safety Information**

### **Warnings and Precautions**

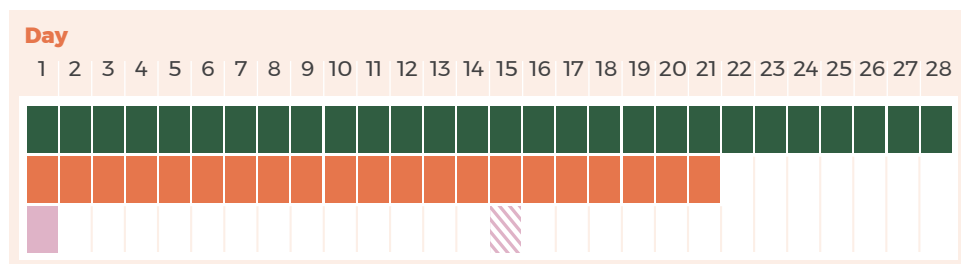
Itovebi has warnings and precautions for hyperglycemia, stomatitis, diarrhea, and embryo-fetal toxicity.

**Please see Important Safety Information for Itovebi on pages 9-11 and full Prescribing Information.**

# Itovebi™ offers once-daily dosing<sup>1</sup>

 **itovebi**™  
inavolisib 3 mg • 9 mg tablets

## Itovebi should be taken in combination with palbociclib and fulvestrant on a 28-day cycle



- Itovebi orally once a day
- Palbociclib orally once a day
- Fulvestrant injection
- Fulvestrant injection (cycle 1 only)

- The recommended dose of Itovebi is 9 mg taken orally, once daily, with or without food, until disease progression or unacceptable toxicity

### Advise patients to:

- ✓ Take Itovebi at approximately the same time each day
- ✓ Swallow Itovebi tablet(s) whole—do not chew, crush, or split prior to swallowing

- If a patient misses a dose, instruct the patient to take the missed dose as soon as possible within 9 hours. After more than 9 hours, instruct the patient to skip the dose and take the next dose at the scheduled time
- If a patient vomits a dose, instruct patients not to take an additional dose on that day, and to resume the usual dosing schedule the next day
- The recommended dose of palbociclib is 125 mg taken orally, once daily, for 21 consecutive days followed by 7 days off treatment to comprise a complete cycle of 28 days
- The recommended dose of fulvestrant is 500 mg administered intramuscularly on cycle 1, days 1 and 15, and then on day 1 of every 28-day cycle
- Refer to the full Prescribing Information for palbociclib and fulvestrant for complete dosing information
- Treatment of pre/perimenopausal women with Itovebi should also include a luteinizing hormone-releasing hormone (LHRH) agonist; consider an LHRH agonist for male patients

Please see **Important Safety Information for Itovebi** on pages 9-11 and full **Prescribing Information**.

## How Itovebi is supplied and stored

Package configuration	Tablet strength	NDC	Tablet description
Bottle of 28 tablets	9 mg	50242-079-08	Pink and oval-shaped with an “INA 9” debossing on one side
Bottle of 28 tablets	3 mg	50242-084-08	Red and round convex-shaped with an “INA 3” debossing on one side

- Store Itovebi at 20°C to 25°C (68°F to 77°F); temperature excursions permitted between 15°C and 30°C (between 59°F and 86°F)

## Dose reduction of Itovebi for adverse reactions

### Recommended starting dose



9 mg daily

### First dose reduction



6 mg daily  
(two 3-mg tablets)

### Second dose reduction



3 mg daily

Tablets not actual size.

- The recommended starting dose of Itovebi for patients with moderate renal impairment (eGFR 30 to <60 mL/min based on CKD-EPI) is 6 mg orally once daily
- Permanently discontinue Itovebi treatment if patients are unable to tolerate the second dose reduction

CKD-EPI=Chronic Kidney Disease Epidemiology Collaboration; eGFR=estimated glomerular filtration rate; NDC=National Drug Code.

# Hyperglycemia monitoring and management recommendations<sup>1</sup>



Severe hyperglycemia can occur in patients treated with Itovebi. The safety of Itovebi in patients with type 1 diabetes mellitus, or type 2 diabetes mellitus requiring ongoing systemic therapy, has not been studied.

**Median time to first onset of hyperglycemia:** 7 days (range: 2 to 955 days)

## **Before initiating treatment with Itovebi:**

- Test fasting glucose levels (FPG or FBG), HbA<sub>1c</sub> levels, and optimize fasting glucose

## **After initiating treatment with Itovebi or in patients who experience hyperglycemia after initiating treatment with Itovebi:**

- Monitor or self-monitor fasting glucose levels:
  - Once every 3 days for the first week (days 1 to 7)
  - Then once every week for the next 3 weeks (days 8 to 28)
  - Then once every 2 weeks for the next 8 weeks
  - Then once every 4 weeks thereafter, and as clinically indicated
- Monitor HbA<sub>1c</sub> every 3 months and as clinically indicated

## **Managing hyperglycemia:**

- Manage hyperglycemia with antihyperglycemic medications as clinically indicated
- During antihyperglycemic treatment, continue monitoring fasting glucose levels
- Patients with a history of well-controlled type 2 diabetes mellitus may require intensified antihyperglycemic treatment and close monitoring of fasting glucose levels
- Based on the severity of the hyperglycemia, Itovebi may require dose interruption, reduction, or discontinuation

## **Patient counseling information**

- ✔ Advise patients of the signs and symptoms of hyperglycemia and counsel patients on lifestyle changes
- ✔ Advise patients that Itovebi may cause hyperglycemia and the need to monitor fasting glucose levels periodically during therapy
- ✔ Advise patients to contact their healthcare provider immediately for signs and symptoms of hyperglycemia—eg, excessive thirst, urinating more often, blurred vision, mental confusion, difficulty breathing, or increased appetite with weight loss

FBG=fasting blood glucose; FPG=fasting plasma glucose; HbA<sub>1c</sub>=hemoglobin A<sub>1c</sub>.

**Please see Important Safety Information for Itovebi on pages 9-11 and full Prescribing Information.**

# Recommended dose modifications of Itovebi for hyperglycemia<sup>1</sup>



## HYPERGLYCEMIA

Fasting Glucose Level (FPG or FBC)*	Recommended dose modifications
>ULN to 160 mg/dL (>ULN to 8.9 mmol/L)	<ul style="list-style-type: none"><li>➤ No adjustment of Itovebi required</li><li>➤ Consider dietary modifications and ensure adequate hydration</li><li>➤ Initiate or intensify oral antihyperglycemic medications for patients with risk factors for hyperglycemia</li></ul>
>160 to 250 mg/dL (>8.9 to 13.9 mmol/L)	<ul style="list-style-type: none"><li>➤ Withhold Itovebi until FPG or FBC ≤160 mg/dL (≤8.9 mmol/L)</li><li>➤ Initiate or intensify antihyperglycemic medications</li><li>➤ Resume Itovebi at the same dose level</li><li>➤ If FPG or FBC persists &gt;200 to 250 mg/dL (&gt;11.1 to 13.9 mmol/L) for 7 days under appropriate antihyperglycemic treatment, consider consultation with a healthcare professional experienced in the treatment of hyperglycemia</li></ul>
>250 to 500 mg/dL (>13.9 to 27.8 mmol/L)	<ul style="list-style-type: none"><li>➤ Withhold Itovebi</li><li>➤ Initiate or intensify antihyperglycemic medications</li><li>➤ Administer appropriate hydration if required</li><li>➤ If FPG or FBC decreases to ≤160 mg/dL (≤8.9 mmol/L) within 7 days, resume Itovebi at the same dose level</li><li>➤ If FPG or FBC decreases to ≤160 mg/dL (≤8.9 mmol/L) in ≥8 days, resume Itovebi at one lower dose level</li><li>➤ If FPG or FBC &gt;250 to 500 mg/dL (&gt;13.9 to 27.8 mmol/L) recurs within 30 days, withhold Itovebi until fasting glucose level decreases to ≤160 mg/dL (≤8.9 mmol/L). Resume Itovebi at one lower dose level</li></ul>
>500 mg/dL (>27.8 mmol/L)	<ul style="list-style-type: none"><li>➤ Withhold Itovebi</li><li>➤ Initiate or intensify antihyperglycemic medications</li><li>➤ Assess for volume depletion and ketosis and administer appropriate hydration</li><li>➤ If fasting glucose level decreases to ≤160 mg/dL (≤8.9 mmol/L), resume Itovebi at one lower dose level</li><li>➤ If fasting glucose level &gt;500 mg/dL (&gt;27.8 mmol/L) recurs within 30 days, permanently discontinue Itovebi</li></ul>

➤ 96% (52/54) of patients who experienced an increased fasting glucose of >160 mg/dL had an improvement of at least 1 grade level; the median time to improvement from the first event was 8 days (range: 2 to 43 days)

ULN=upper limit of normal.  
<sup>1</sup>Before initiating treatment with Itovebi, test FPG or FBC, and HbA<sub>1c</sub> levels, and optimize plasma/blood glucose levels in all patients. After initiating treatment with Itovebi, monitor FPG or FBC levels based on the recommended schedule, and as clinically indicated.

# Recommended dose modifications of Itovebi for stomatitis and diarrhea<sup>1</sup>



## STOMATITIS

Severity*	Recommended dose modifications
<b>Grade 1</b>	<ul style="list-style-type: none"> <li>➤ No adjustment of Itovebi required</li> <li>➤ Initiate or intensify appropriate medical therapy (eg, corticosteroid-containing mouthwash) as clinically indicated</li> </ul>
<b>Grade 2</b>	<ul style="list-style-type: none"> <li>➤ Withhold Itovebi until recovery to grade ≤1</li> <li>➤ Initiate or intensify appropriate medical therapy. Resume Itovebi at the same dose level</li> <li>➤ For recurrent grade 2 stomatitis, withhold Itovebi until recovery to grade ≤1, then resume Itovebi at one lower dose level</li> </ul>
<b>Grade 3</b>	<ul style="list-style-type: none"> <li>➤ Withhold Itovebi until recovery to grade ≤1</li> <li>➤ Initiate or intensify appropriate medical therapy. Resume Itovebi at one lower dose level</li> </ul>
<b>Grade 4</b>	<ul style="list-style-type: none"> <li>➤ Permanently discontinue Itovebi</li> </ul>

## DIARRHEA

Severity*	Recommended dose modifications
<b>Grade 1</b>	<ul style="list-style-type: none"> <li>➤ No adjustment of Itovebi required</li> <li>➤ Initiate appropriate medical therapy and monitor as clinically indicated</li> </ul>
<b>Grade 2</b>	<ul style="list-style-type: none"> <li>➤ Withhold Itovebi until recovery to grade ≤1, then resume Itovebi at the same dose level</li> <li>➤ Initiate or intensify appropriate medical therapy and monitor as clinically indicated</li> <li>➤ For recurrent grade 2 diarrhea, withhold Itovebi until recovery to grade ≤1, then resume Itovebi at one lower dose level</li> </ul>
<b>Grade 3</b>	<ul style="list-style-type: none"> <li>➤ Withhold Itovebi until recovery to grade ≤1, then resume Itovebi at one lower dose level</li> <li>➤ Initiate or intensify appropriate medical therapy and monitor as clinically indicated</li> </ul>
<b>Grade 4</b>	<ul style="list-style-type: none"> <li>➤ Permanently discontinue Itovebi</li> </ul>

\*Based on Common Terminology Criteria for Adverse Events (CTCAE) version 5.0.

Please see **Important Safety Information for Itovebi** on pages 9-11 and full **Prescribing Information**.

# Additional patient counseling information



## Stomatitis



Advise patients that Itovebi may cause stomatitis, which may be severe, and to notify their healthcare provider if they develop symptoms of stomatitis (eg, painful redness, swelling, or sores in the mouth)

## Diarrhea



Advise patients that Itovebi may cause diarrhea, which may be severe, and to start antidiarrheal treatment, increase oral fluids, and notify their healthcare provider if diarrhea occurs while taking Itovebi

## Embryo-Fetal Toxicity



Inform pregnant women and females of reproductive potential of the potential risk to a fetus. Advise females to inform their healthcare provider of a known or suspected pregnancy



Advise females of reproductive potential to use effective non-hormonal contraception during treatment with Itovebi and for 1 week after the last dose



Advise male patients with female partners of reproductive potential to use effective contraception during treatment with Itovebi and for 1 week after the last dose



Refer to the full Prescribing Information of palbociclib and fulvestrant for pregnancy and contraception information

## Lactation



Advise women not to breastfeed during treatment with Itovebi and for 1 week after the last dose. Refer to the full Prescribing Information of palbociclib and fulvestrant for lactation information

## Infertility



Advise females and males of reproductive potential that Itovebi may impair fertility. Refer to the full Prescribing Information of palbociclib and fulvestrant for infertility information

# Recommended Itovebi dose modifications for hematologic toxicities and non-hematologic adverse reactions<sup>1\*</sup>



## HEMATOLOGIC TOXICITIES

Severity <sup>†</sup>	Recommended dose modifications
<b>Grade 1, 2, or 3</b>	<ul style="list-style-type: none"><li>➤ No adjustment of Itovebi required</li><li>➤ Monitor complete blood count and for signs or symptoms of hematologic toxicities as clinically indicated</li></ul>
<b>Grade 4</b>	<ul style="list-style-type: none"><li>➤ Withhold Itovebi until recovery to grade ≤2</li><li>➤ Resume Itovebi at the same dose level or reduce to one lower dose level as clinically indicated</li></ul>

## OTHER ADVERSE REACTIONS

Severity <sup>†</sup>	Recommended dose modifications
<b>Grade 1</b>	<ul style="list-style-type: none"><li>➤ No adjustment of Itovebi required</li></ul>
<b>Grade 2</b>	<ul style="list-style-type: none"><li>➤ Consider withholding Itovebi, if clinically indicated, until recovery to grade ≤1</li><li>➤ Resume Itovebi at the same dose level</li></ul>
<b>Grade 3 first event</b>	<ul style="list-style-type: none"><li>➤ Withhold Itovebi until recovery to grade ≤1</li><li>➤ Resume Itovebi at the same dose level or one lower dose level based on clinical evaluation</li></ul>
<b>Grade 3 recurrent</b>	<ul style="list-style-type: none"><li>➤ Withhold Itovebi until recovery to grade ≤1</li><li>➤ Resume Itovebi at one lower dose level</li></ul>
<b>Grade 4</b>	<ul style="list-style-type: none"><li>➤ Permanently discontinue Itovebi</li></ul>

<sup>\*</sup>Not including hyperglycemia, stomatitis, and diarrhea.

<sup>†</sup>Based on CTCAE version 5.0.

Please see **Important Safety Information for Itovebi** on pages 9-11 and full **Prescribing Information**.



# Important Safety Information and Indication



## Important Safety Information

### Warnings and Precautions

Itovebi has warnings and precautions for hyperglycemia, stomatitis, diarrhea, and embryo-fetal toxicity.

#### Hyperglycemia

Severe hyperglycemia can occur in patients treated with Itovebi.

Increased fasting glucose occurred in 85% of patients treated with Itovebi, including 22% of patients with Grade 2 (FPG > 160 to 250 mg/dL), 12% with Grade 3 (FPG > 250 to 500 mg/dL), and 0.6% with Grade 4 (FPG > 500 mg/dL) events.

In INAVOI20, 46% (74/162) of patients who received Itovebi were treated with oral anti-hyperglycemic medications and 7% (11/162) were treated with insulin to manage increased fasting glucose. In patients who experienced increased fasting glucose of > 160 mg/dL, 96% (52/54) had an improvement in fasting glucose of at least one grade level with a median time to improvement from the first event of 8 days (range: 2 to 43 days). Among patients with hyperglycemia, the median time to first onset was 7 days (range: 2 to 955 days). Hyperglycemia led to dose interruption in 28%, to dose reduction in 2.5%, and to discontinuation of Itovebi in 1.2% of patients.

The safety of Itovebi in patients with Type 1 diabetes mellitus, or Type 2 diabetes mellitus requiring ongoing anti-hyperglycemic treatment have not been studied.

Before initiating treatment with Itovebi, test fasting glucose levels (FPG or FBG), HbA<sub>1c</sub> levels, and optimize fasting glucose. After initiating treatment with Itovebi or in patients who experience hyperglycemia after initiating treatment with Itovebi, monitor or self-monitor fasting glucose levels once every 3 days for the first week (Day 1 to 7), then once every week for the next 3 weeks (Day 8 to 28), then once every 2 weeks for the next 8 weeks, then once every 4 weeks thereafter, and as clinically indicated. Monitor HbA<sub>1c</sub> every 3 months and as clinically indicated.

Manage hyperglycemia with anti-hyperglycemic medications as clinically indicated. During treatment with anti-hyperglycemic medication, continue monitoring fasting glucose levels. Patients with a history of well-controlled Type 2 diabetes mellitus may require intensified anti-hyperglycemic treatment and close monitoring of fasting glucose levels.

Consider consultation with a healthcare professional experienced in the treatment of hyperglycemia, and initiation of fasting glucose monitoring at home for patients who have risk factors for hyperglycemia or who experience

**Please see Important Safety Information for Itovebi on pages 10-11 and full Prescribing Information.**

# Important Safety Information and Indication (*cont'd*)



hyperglycemia. Advise patients of the signs and symptoms of hyperglycemia and counsel patients on lifestyle changes.

Based on the severity of the hyperglycemia, Itovebi may require dose interruption, reduction, or discontinuation.

## **Stomatitis**

Severe stomatitis can occur in patients treated with Itovebi.

Stomatitis occurred in 51% of patients treated with Itovebi in combination with palbociclib and fulvestrant, including Grade 3 events in 6% of patients. The median time to first onset was 13 days (range: 1 to 610 days). Stomatitis led to interruption of Itovebi in 10%, to dose reduction in 3.7%, and to discontinuation of Itovebi in 0.6% of patients.

In patients who received Itovebi in combination with palbociclib and fulvestrant, 38% used a mouthwash containing corticosteroid for management or prophylaxis of stomatitis.

Monitor patients for signs and symptoms of stomatitis. Withhold, reduce dose, or permanently discontinue Itovebi based on severity.

## **Diarrhea**

Severe diarrhea, including dehydration and acute kidney injury, can occur in patients treated with Itovebi.

Diarrhea occurred in 48% of patients treated with Itovebi in combination with palbociclib and fulvestrant; including Grade 3 events in 3.7% of patients. The median time to first onset was 15 days (range: 2 to 602 days). Anti-diarrheal medicines were used in 28% (46/162) of patients who received Itovebi in combination with palbociclib and fulvestrant to manage symptoms. Dose interruptions were required in 7% of patients, and dose reductions occurred in 1.2%.

Monitor patients for signs and symptoms of diarrhea. Advise patients to increase oral fluids and start anti-diarrheal treatment at the first sign of diarrhea while taking Itovebi. Withhold, reduce dose, or permanently discontinue Itovebi based on severity.

## **Embryo-Fetal Toxicity**

Based on findings in animals and its mechanism of action, Itovebi can cause fetal harm when administered to a pregnant woman. In an animal reproduction study, oral administration of inavolisib to pregnant rats during the period of organogenesis caused adverse developmental outcomes, including embryo-fetal mortality, structural abnormalities, and alterations to growth at maternal exposures approximately equivalent to the human exposure at the recommended dose of 9 mg/day based on area under the curve (AUC).

**Please see Important Safety Information for Itovebi on page 11 and full Prescribing Information.**

# Important Safety Information and Indication (*cont'd*)



Advise pregnant women and females of reproductive potential of the potential risk to a fetus. Advise females of reproductive potential to use effective non-hormonal contraception during treatment with Itovebi and for 1 week after the last dose. Advise male patients with female partners of reproductive potential to use effective contraception during treatment with Itovebi and for 1 week after the last dose.

## Most Common Adverse Reactions

The most common ( $\geq 20\%$ ) adverse reactions, including laboratory abnormalities, were decreased neutrophils, decreased hemoglobin, increased fasting glucose, decreased platelets, decreased lymphocytes, stomatitis, diarrhea, decreased calcium, fatigue, decreased potassium, increased creatinine, increased ALT, nausea, decreased sodium, decreased magnesium, rash, decreased appetite, COVID-19 infection, and headache.

You may report side effects to the FDA at (800) FDA-1088 or [www.fda.gov/medwatch](http://www.fda.gov/medwatch). You may also report side effects to Genentech at (888) 835-2555.

## Indication

Itovebi (inavolisib), in combination with palbociclib and fulvestrant, is indicated for the treatment of adults with endocrine-resistant, *PIK3CA*-mutated, hormone receptor (HR)-positive, human epidermal growth-factor receptor 2 (HER2)-negative, locally advanced or metastatic breast cancer, as detected by an FDA-approved test, following recurrence on or after completing adjuvant endocrine therapy.

**Please see the full Prescribing Information for additional Important Safety Information.**

**Reference:** 1. Itovebi Prescribing Information. Genentech, Inc. 2024.

# The majority of patients in INAVO120 did not require dose reduction or discontinuation<sup>1</sup>

- **Dose interruptions of Itovebi** due to an adverse reaction occurred in 69% of patients
- **Dose reductions of Itovebi** due to adverse reactions occurred in 14% of patients
- **Low permanent discontinuation rate** (6%) of Itovebi due to any adverse reactions

**The recommended dose of Itovebi is 9 mg taken orally once daily, with or without food, until disease progression or unacceptable toxicity.\* The first dose reduction for adverse reactions is 6 mg daily; the second dose reduction is 3 mg daily.**

\*Recommended starting dose for patients with moderate renal impairment (eGFR 30 to 60 mL/min based on CKD-EPI) is 6 mg daily.

## Indication

Itovebi (inavolisib), in combination with palbociclib and fulvestrant, is indicated for the treatment of adults with endocrine-resistant, *PIK3CA*-mutated, hormone receptor (HR)-positive, human epidermal growth-factor receptor 2 (HER2)-negative, locally advanced or metastatic breast cancer, as detected by an FDA-approved test, following recurrence on or after completing adjuvant endocrine therapy.

## Important Safety Information

### Warnings and Precautions

Itovebi has warnings and precautions for hyperglycemia, stomatitis, diarrhea, and embryo-fetal toxicity.

**Please see Important Safety Information for Itovebi on pages 9-11 and full Prescribing Information.**

**HIGHLIGHTS OF PRESCRIBING INFORMATION**  
**These highlights do not include all the information needed to use ITOVEBI safely and effectively. See full prescribing information for ITOVEBI.**

**ITOVEBI (inavolisib) tablets, for oral use**  
**Initial U.S. Approval: 2024**

-----**INDICATIONS AND USAGE**-----

ITOVEBI is a kinase inhibitor indicated in combination with palbociclib and fulvestrant for the treatment of adults with endocrine-resistant, *PIK3CA*-mutated, hormone receptor (HR)-positive, human epidermal growth factor receptor 2 (HER2)-negative, locally advanced or metastatic breast cancer, as detected by an FDA-approved test, following recurrence on or after completing adjuvant endocrine therapy. (1, 14.1)

-----**DOSAGE AND ADMINISTRATION**-----

- Select patients for the treatment of HR-positive, HER2-negative, locally advanced or metastatic breast cancer with ITOVEBI based on the presence of one or more *PIK3CA* mutations in plasma specimen. (2.1)
- Recommended dosage: 9 mg orally once daily with or without food. (2.3)
- See Full Prescribing Information for dosage modifications of ITOVEBI due to adverse reactions. (2.4)
- Reduce the starting dose in patients with moderate renal impairment. (2.5)

-----**DOSAGE FORMS AND STRENGTHS**-----

Tablets: 3 mg and 9 mg (3)

-----**CONTRAINDICATIONS**-----

None. (4)

-----**WARNINGS AND PRECAUTIONS**-----

- **Hyperglycemia:** ITOVEBI can cause hyperglycemia. Initiate or optimize anti-hyperglycemic medications as clinically indicated. Interrupt, reduce dose, or discontinue ITOVEBI if severe hyperglycemia occurs. (2.4, 5.1)
- **Stomatitis:** ITOVEBI can cause severe stomatitis. Consider treating with a corticosteroid-containing mouthwash if stomatitis occurs. Monitor

patients for signs and symptoms of stomatitis. Withhold, reduce dose, or permanently discontinue ITOVEBI based on severity. (2.4, 5.2)

- **Diarrhea:** ITOVEBI can cause diarrhea, which may be severe, and result in dehydration and acute kidney injury. Advise patients to start anti-diarrheal treatment, increase oral fluids, and notify their healthcare provider if severe diarrhea occurs. Interrupt, reduce dose, or discontinue ITOVEBI if severe diarrhea occurs. (2.4, 5.3)
- **Embryo-Fetal Toxicity:** ITOVEBI can cause fetal harm. Advise patients of potential risk to a fetus and to use effective non-hormonal contraception. (5.4, 8.1, 8.3)  
Refer to the Full Prescribing Information of palbociclib and fulvestrant for pregnancy and contraception information.

-----**ADVERSE REACTIONS**-----

The most common ( $\geq 20\%$ ) adverse reactions, including laboratory abnormalities, were decreased neutrophils, decreased hemoglobin, increased fasting glucose, decreased platelets, decreased lymphocytes, stomatitis, diarrhea, decreased calcium, fatigue, decreased potassium, increased creatinine, increased ALT, nausea, decreased sodium, decreased magnesium, rash, decreased appetite, COVID-19 infection, and headache. (6.1)

**To report SUSPECTED ADVERSE REACTIONS, contact Genentech at 1-888-835-2555 or FDA at 1-800-FDA-1088 or [www.fda.gov/medwatch](http://www.fda.gov/medwatch).**

-----**USE IN SPECIFIC POPULATIONS**-----

**Lactation:** Advise not to breastfeed. (8.2)

**See 17 for PATIENT COUNSELING INFORMATION and FDA-approved patient labeling.**

**Revised: 01/2025**

**FULL PRESCRIBING INFORMATION: CONTENTS\***

**1 INDICATIONS AND USAGE**

**2 DOSAGE AND ADMINISTRATION**

- 2.1 Patient Selection
- 2.2 Recommended Evaluation Before Initiating ITOVEBI
- 2.3 Recommended Dosage
- 2.4 Dosage Modifications for Adverse Reactions
- 2.5 Dosage Modification for Moderate Renal Impairment

**3 DOSAGE FORMS AND STRENGTHS**

**4 CONTRAINDICATIONS**

**5 WARNINGS AND PRECAUTIONS**

- 5.1 Hyperglycemia
- 5.2 Stomatitis
- 5.3 Diarrhea
- 5.4 Embryo-Fetal Toxicity

**6 ADVERSE REACTIONS**

- 6.1 Clinical Trial Experience

**8 USE IN SPECIFIC POPULATIONS**

- 8.1 Pregnancy
- 8.2 Lactation

- 8.3 Females and Males of Reproductive Potential
- 8.4 Pediatric Use
- 8.5 Geriatric Use
- 8.6 Renal Impairment

**11 DESCRIPTION**

**12 CLINICAL PHARMACOLOGY**

- 12.1 Mechanism of Action
- 12.2 Pharmacodynamics
- 12.3 Pharmacokinetics

**13 NONCLINICAL TOXICOLOGY**

- 13.1 Carcinogenesis, Mutagenesis, Impairment of Fertility
- 13.2 Animal Toxicology and/or Pharmacology

**14 CLINICAL STUDIES**

- 14.1 Locally Advanced or Metastatic Breast Cancer

**16 HOW SUPPLIED/STORAGE AND HANDLING**

**17 PATIENT COUNSELING INFORMATION**

\* Sections or subsections omitted from the full prescribing information are not listed.

## FULL PRESCRIBING INFORMATION

### 1 INDICATIONS AND USAGE

ITOVEBI, in combination with palbociclib and fulvestrant, is indicated for the treatment of adults with endocrine-resistant, *PIK3CA*-mutated, hormone receptor (HR)-positive, human epidermal growth factor receptor 2 (HER2)-negative, locally advanced or metastatic breast cancer, as detected by an FDA-approved test, following recurrence on or after completing adjuvant endocrine therapy [see *Clinical Studies (14.1)*].

### 2 DOSAGE AND ADMINISTRATION

#### 2.1 Patient Selection

Select patients for the treatment of HR-positive, HER2-negative, locally advanced or metastatic breast cancer with ITOVEBI based on the presence of one or more *PIK3CA* mutations in plasma specimens [see *Clinical Studies (14.1)*].

Information on FDA-approved tests for the detection of *PIK3CA* mutations in breast cancer is available at: <http://www.fda.gov/companiondiagnostics>.

#### 2.2 Recommended Evaluation Before Initiating ITOVEBI

Evaluate fasting plasma glucose (FPG)/blood glucose (FBG) and hemoglobin A<sub>1C</sub> (HbA<sub>1C</sub>) and optimize blood glucose prior to starting ITOVEBI and at regular intervals during treatment [see *Warnings and Precautions (5.1)*].

#### 2.3 Recommended Dosage

The recommended dosage of ITOVEBI is 9 mg taken orally once daily, with or without food, until disease progression or unacceptable toxicity.

Advise patients to take ITOVEBI at approximately the same time each day.

Swallow ITOVEBI tablet(s) whole. Do not chew, crush, or split prior to swallowing.

If a patient misses a dose, instruct the patient to take the missed dose as soon as possible within 9 hours. After more than 9 hours, instruct the patient to skip the dose and take the next dose at the scheduled time.

If a patient vomits a dose, instruct patients not to take an additional dose on that day and resume the usual dosing schedule the next day.

Administer ITOVEBI in combination with palbociclib and fulvestrant. The recommended dosage of palbociclib is 125 mg taken orally once daily for 21 consecutive days followed by 7 days off treatment to comprise a cycle of 28 days. Refer to the Full Prescribing Information for palbociclib and fulvestrant for dosing information.

For premenopausal and perimenopausal women, administer a luteinizing hormone-releasing hormone (LHRH) agonist in accordance with local clinical practice.

For men, consider administering an LHRH agonist in accordance with local clinical practice.

#### 2.4 Dosage Modifications for Adverse Reactions

The recommended dose reduction levels of ITOVEBI for adverse reactions are listed in Table 1. Permanently discontinue ITOVEBI if patients are unable to tolerate the second dose reduction.

**Table 1: Dose Reduction for Adverse Reactions**

Dose Level	Dose and Schedule
Recommended starting dose	9 mg daily
First dose reduction	6 mg daily

Dose Level	Dose and Schedule
Second dose reduction	3 mg daily

The recommended dosage modifications of ITOVEBI for adverse reactions are summarized in Table 2.

**Table 2: Recommended Dosage Modifications for Adverse Reactions**

Adverse Reaction	Severity	Dosage Modification
<b>Hyperglycemia<sup>a</sup></b> <i>[see Warnings and Precautions (5.1)]</i>	Fasting glucose levels (FPG or FBG) > ULN to 160 mg/dL (> ULN – 8.9 mmol/L)	<ul style="list-style-type: none"> <li>No adjustment of ITOVEBI required.</li> <li>Consider dietary modifications and ensure adequate hydration.</li> <li>Initiate or intensify oral anti-hyperglycemic medications for patients with risk factors for hyperglycemia.</li> </ul>
	Fasting glucose levels > 160 to 250 mg/dL (> 8.9 – 13.9 mmol/L)	<ul style="list-style-type: none"> <li>Withhold ITOVEBI until FPG or FBG ≤ 160 mg/dL (≤ 8.9 mmol/L).</li> <li>Initiate or intensify anti-hyperglycemic medications.</li> <li>Resume ITOVEBI at the same dose level.</li> <li>If FPG or FBG persists &gt; 200 – 250 mg/dL (&gt; 11.1 – 13.9 mmol/L) for 7 days under appropriate anti-hyperglycemic treatment, consider consultation with a healthcare professional experienced in the treatment of hyperglycemia.</li> </ul>
	Fasting glucose levels > 250 to 500 mg/dL (> 13.9 – 27.8 mmol/L)	<ul style="list-style-type: none"> <li>Withhold ITOVEBI.</li> <li>Initiate or intensify anti-hyperglycemic medications.</li> <li>Administer appropriate hydration if required.</li> <li>If FPG or FBG decreases to ≤ 160 mg/dL (≤ 8.9 mmol/L) within 7 days, resume ITOVEBI at the same dose level.</li> <li>If FPG or FBG decreases to ≤ 160 mg/dL (≤ 8.9 mmol/L) in ≥ 8 days, resume ITOVEBI at one lower dose level.</li> <li>If FPG or FBG &gt; 250 to 500 mg/dL (&gt; 13.9 – 27.8 mmol/L) recurs within 30 days, withhold ITOVEBI until FPG or FBG decreases to ≤ 160 mg/dL (≤ 8.9 mmol/L). Resume ITOVEBI at one lower dose level.</li> </ul>
	Fasting glucose levels > 500 mg/dL (> 27.8 mmol/L)	<ul style="list-style-type: none"> <li>Withhold ITOVEBI.</li> <li>Initiate or intensify anti-hyperglycemic medications.</li> <li>Assess for volume depletion and ketosis and administer appropriate hydration.</li> <li>If FPG or FBG decreases to ≤ 160 mg/dL (≤ 8.9 mmol/L), resume ITOVEBI at one lower dose level.</li> <li>If FPG or FBG &gt; 500 mg/dL (&gt; 27.8 mmol/L) recurs within 30 days, permanently discontinue ITOVEBI.</li> </ul>
<b>Stomatitis</b> <i>[see Warnings and Precautions (5.2)]</i>	Grade 1 <sup>b</sup>	<ul style="list-style-type: none"> <li>No adjustment of ITOVEBI required.</li> <li>Initiate or intensify appropriate medical therapy (e.g., corticosteroid-containing mouthwash) as clinically indicated.</li> </ul>
	Grade 2 <sup>b</sup>	<ul style="list-style-type: none"> <li>Withhold ITOVEBI until recovery to Grade ≤ 1.</li> <li>Initiate or intensify appropriate medical therapy. Resume ITOVEBI at the same dose level.</li> <li>For recurrent Grade 2 stomatitis, withhold ITOVEBI until recovery to Grade ≤ 1, then resume ITOVEBI at one lower dose level.</li> </ul>
	Grade 3 <sup>b</sup>	<ul style="list-style-type: none"> <li>Withhold ITOVEBI until recovery to Grade ≤ 1.</li> <li>Initiate or intensify appropriate medical therapy. Resume ITOVEBI at one lower dose level.</li> </ul>

Adverse Reaction	Severity	Dosage Modification
	Grade 4 <sup>b</sup>	<ul style="list-style-type: none"> <li>Permanently discontinue ITOVEBI.</li> </ul>
<b>Diarrhea</b> <i>[see Warnings and Precautions (5.3)]</i>	Grade 1 <sup>b</sup>	<ul style="list-style-type: none"> <li>No adjustment of ITOVEBI required.</li> <li>Initiate appropriate medical therapy and monitor as clinically indicated.</li> </ul>
	Grade 2 <sup>b</sup>	<ul style="list-style-type: none"> <li>Withhold ITOVEBI until recovery to Grade <math>\leq 1</math>, then resume ITOVEBI at the same dose level.</li> <li>Initiate or intensify appropriate medical therapy and monitor as clinically indicated.</li> <li>For recurrent Grade 2 diarrhea, withhold ITOVEBI until recovery to Grade <math>\leq 1</math>, then resume ITOVEBI at one lower dose level.</li> </ul>
	Grade 3 <sup>b</sup>	<ul style="list-style-type: none"> <li>Withhold ITOVEBI until recovery to Grade <math>\leq 1</math>, then resume ITOVEBI at one lower dose level.</li> <li>Initiate or intensify appropriate medical therapy and monitor as clinically indicated.</li> </ul>
	Grade 4 <sup>b</sup>	<ul style="list-style-type: none"> <li>Permanently discontinue ITOVEBI.</li> </ul>
<b>Hematologic Toxicities</b> <i>[see Adverse Reactions (6.1)]</i>	Grade 1, 2, or 3 <sup>b</sup>	<ul style="list-style-type: none"> <li>No adjustment of ITOVEBI required.</li> <li>Monitor complete blood count and for signs or symptoms of hematologic toxicities as clinically indicated.</li> </ul>
	Grade 4 <sup>b</sup>	<ul style="list-style-type: none"> <li>Withhold ITOVEBI until recovery to Grade <math>\leq 2</math>.</li> <li>Resume ITOVEBI at the same dose level or reduce to one lower dose level as clinically indicated.</li> </ul>
<b>Other Adverse Reactions</b> <i>[see Adverse Reactions (6.1)]</i>	Grade 1 <sup>b</sup>	<ul style="list-style-type: none"> <li>No adjustment of ITOVEBI required.</li> </ul>
	Grade 2 <sup>b</sup>	<ul style="list-style-type: none"> <li>Consider withholding ITOVEBI, if clinically indicated, until recovery to Grade <math>\leq 1</math>.</li> <li>Resume ITOVEBI at the same dose level.</li> </ul>
	Grade 3 (first event) <sup>b</sup>	<ul style="list-style-type: none"> <li>Withhold ITOVEBI until recovery to Grade <math>\leq 1</math>.</li> <li>Resume ITOVEBI at the same dose level or one lower dose level based on clinical evaluation.</li> </ul>
	Grade 3 (recurrent) <sup>b</sup>	<ul style="list-style-type: none"> <li>Withhold ITOVEBI until recovery to Grade <math>\leq 1</math>.</li> <li>Resume ITOVEBI at one lower dose level.</li> </ul>
	Grade 4 <sup>b</sup>	<ul style="list-style-type: none"> <li>Permanently discontinue ITOVEBI.</li> </ul>
<sup>a</sup> Before initiating treatment with ITOVEBI, test FPG or FBG, and HbA <sub>1C</sub> levels, and optimize plasma/blood glucose levels in all patients. After initiating treatment with ITOVEBI, monitor FPG or FBG levels based on the recommended schedule, and as clinically indicated <i>[see Warnings and Precautions (5.1)]</i> . <sup>b</sup> Based on CTCAE version 5.0.		

## 2.5 Dosage Modification for Moderate Renal Impairment

The recommended starting dosage of ITOVEBI for patients with moderate renal impairment (eGFR 30 to < 60 mL/min based on CKD-EPI) is 6 mg orally once daily *[see Use in Specific Populations (8.6) and Clinical Pharmacology (12.3)]*.

## 3 DOSAGE FORMS AND STRENGTHS

Tablets:

- 3 mg: red and round convex-shaped with an “INA 3” debossing on one side.
- 9 mg: pink and oval-shaped with an “INA 9” debossing on one side.



## 4 CONTRAINDICATIONS

None.

## 5 WARNINGS AND PRECAUTIONS

### 5.1 Hyperglycemia

Severe hyperglycemia can occur in patients treated with ITOVEBI.

Increased fasting glucose occurred in 85% of patients treated with ITOVEBI, including 22% of patients with Grade 2 (FPG > 160 to 250 mg/dL), 12% with Grade 3 (FPG > 250 to 500 mg/dL), and 0.6% with Grade 4 (FPG > 500 mg/dL) events.

In INAVO120, 46% (74/162) of patients who received ITOVEBI were treated with oral anti-hyperglycemic medications and 7% (11/162) were treated with insulin to manage increased fasting glucose. In patients who experienced increased fasting glucose of > 160 mg/dL, 96% (52/54) had an improvement in fasting glucose of at least one grade level with a median time to improvement from the first event of 8 days (range: 2 to 43 days).

Among patients with hyperglycemia, the median time to first onset was 7 days (range: 2 to 955 days).

Hyperglycemia led to dose interruption in 28%, to dose reduction in 2.5%, and to discontinuation of ITOVEBI in 1.2% of patients.

The safety of ITOVEBI in patients with Type 1 diabetes mellitus, or Type 2 diabetes mellitus requiring ongoing anti-hyperglycemic treatment have not been studied.

Before initiating treatment with ITOVEBI, test fasting glucose levels (FPG or FBG), HbA<sub>1C</sub> levels, and optimize fasting glucose.

After initiating treatment with ITOVEBI, or in patients who experience hyperglycemia after initiating treatment with ITOVEBI, monitor or self-monitor fasting glucose levels once every 3 days for the first week (Day 1 to 7), then once every week for the next 3 weeks (Day 8 to 28), then once every 2 weeks for the next 8 weeks, then once every 4 weeks thereafter, and as clinically indicated. Monitor HbA<sub>1C</sub> every 3 months and as clinically indicated.

Manage hyperglycemia with anti-hyperglycemic medications as clinically indicated. During treatment with anti-hyperglycemic medication, continue monitoring fasting glucose levels. Patients with a history of well-controlled Type 2 diabetes mellitus may require intensified anti-hyperglycemic treatment and close monitoring of fasting glucose levels.

Consider consultation with a healthcare professional experienced in the treatment of hyperglycemia, and initiation of fasting glucose monitoring at home for patients who have risk factors for hyperglycemia or who experience hyperglycemia. Advise patients of the signs and symptoms of hyperglycemia and counsel patients on lifestyle changes.

Based on the severity of the hyperglycemia, ITOVEBI may require dose interruption, reduction, or discontinuation [*see Dosage and Administration (2.4)*].

### 5.2 Stomatitis

Severe stomatitis can occur in patients treated with ITOVEBI.

Stomatitis occurred in 51% of patients treated with ITOVEBI in combination with palbociclib and fulvestrant, including Grade 3 events in 6% of patients. The median time to first onset was 13 days (range: 1 to 610 days).

Stomatitis led to interruption of ITOVEBI in 10%, to dose reduction in 3.7%, and to discontinuation of ITOVEBI in 0.6% of patients.

In patients who received ITOVEBI in combination with palbociclib and fulvestrant, 38% used a mouthwash containing corticosteroid for management or prophylaxis of stomatitis.

Monitor patients for signs and symptoms of stomatitis. Withhold, reduce dose, or permanently discontinue ITOVEBI based on severity [*see Dosage and Administration (2.4)*].

### **5.3 Diarrhea**

Severe diarrhea, including dehydration and acute kidney injury, can occur in patients treated with ITOVEBI.

Diarrhea occurred in 48% of patients treated with ITOVEBI in combination with palbociclib and fulvestrant, including Grade 3 events in 3.7% of patients. The median time to first onset was 15 days (range: 2 to 602 days). Anti-diarrheal medicines were used in 28% (46/162) of patients who received ITOVEBI in combination with palbociclib and fulvestrant to manage symptoms. Dose interruptions were required in 7% of patients, and dose reductions occurred in 1.2% of patients.

Monitor patients for signs and symptoms of diarrhea. Advise patients to increase oral fluids and start anti-diarrheal treatment at the first sign of diarrhea while taking ITOVEBI. Withhold, reduce dose, or permanently discontinue ITOVEBI based on severity [*see Dosage and Administration (2.4)*].

### **5.4 Embryo-Fetal Toxicity**

Based on findings in animals and its mechanism of action, ITOVEBI can cause fetal harm when administered to a pregnant woman [*see Clinical Pharmacology (12.1)*]. In an animal reproduction study, oral administration of inavolisib to pregnant rats during the period of organogenesis caused adverse developmental outcomes, including embryo-fetal mortality, structural abnormalities, and alterations to growth at maternal exposures approximately equivalent to the human exposure at the recommended dose of 9 mg/day based on area under the curve (AUC).

Advise pregnant women and females of reproductive potential of the potential risk to a fetus. Advise females of reproductive potential to use effective non-hormonal contraception during treatment with ITOVEBI and for 1 week after the last dose. Advise male patients with female partners of reproductive potential to use effective contraception during treatment with ITOVEBI and for 1 week after the last dose [*see Use in Specific Populations (8.1 and 8.3)*].

ITOVEBI is used in combination with palbociclib and fulvestrant. Refer to the Full Prescribing Information of palbociclib and fulvestrant for pregnancy and contraception information.

## **6 ADVERSE REACTIONS**

The following adverse reactions are discussed in greater detail in other sections of the label:

- Hyperglycemia [*see Warnings and Precautions (5.1)*]
- Stomatitis [*see Warnings and Precautions (5.2)*]
- Diarrhea [*see Warnings and Precautions (5.3)*]

### **6.1 Clinical Trial Experience**

Because clinical trials are conducted under widely varying conditions, adverse reaction rates observed in the clinical trials of a drug cannot be directly compared to rates in the clinical trials of another drug and may not reflect the rates observed in practice.

#### Locally Advanced or Metastatic Breast Cancer

##### *INAVO120*

The safety of ITOVEBI was evaluated in a randomized, double-blind, placebo-controlled study (INAVO120) in 324 patients with *PIK3CA*-mutated, HR-positive, HER2-negative, locally advanced or metastatic breast cancer [*see Clinical Studies (14.1)*].

Patients received either ITOVEBI 9 mg (n=162) or placebo (n=162) with palbociclib and fulvestrant. The median duration of treatment with ITOVEBI was 9 months (range: 0 to 39 months) in the ITOVEBI with palbociclib and fulvestrant arm.

Serious adverse reactions occurred in 24% of patients who received ITOVEBI with palbociclib and fulvestrant. Serious adverse reactions in  $\geq 1\%$  of patients included anemia (1.9%), diarrhea (1.2%), and urinary tract infection (1.2%).

Fatal adverse reactions occurred in 3.7% of patients who received ITOVEBI with palbociclib and fulvestrant, including (0.6% each) acute coronary syndrome, cerebral hemorrhage, cerebrovascular accident, COVID-19 infection, and gastrointestinal hemorrhage.

Permanent discontinuation of ITOVEBI due to an adverse reaction occurred in 6% of patients. Adverse reactions which resulted in permanent discontinuation of ITOVEBI included hyperglycemia (1.2%), and (0.6% each) stomatitis, gastric ulcer, intestinal perforation, anal abscess, increased ALT, decreased weight, bone pain, musculoskeletal pain, transitional cell carcinoma, and acute kidney injury.

Dosage interruptions of ITOVEBI due to an adverse reaction occurred in 69% of patients. Adverse reactions which required dosage interruption in  $\geq 2\%$  of patients included hyperglycemia (28%), neutropenia (23%), COVID-19 infection (16%), stomatitis (10%), diarrhea (7%), thrombocytopenia (4.9%), anemia (4.3%), upper respiratory tract infection (4.3%), decreased white blood cell count (3.7%), pyrexia (3.1%), nausea (2.5%), and fatigue (2.5%).

Dose reductions of ITOVEBI due to adverse reactions occurred in 14% of patients. Adverse reactions which required dose reduction of ITOVEBI in  $\geq 2\%$  of patients were stomatitis (3.7%) and hyperglycemia (2.5%).

The most common ( $\geq 20\%$ ) adverse reactions, including laboratory abnormalities, were decreased neutrophils, decreased hemoglobin, increased fasting glucose, decreased platelets, decreased lymphocytes, stomatitis, diarrhea, decreased calcium, fatigue, decreased potassium, increased creatinine, increased ALT, nausea, decreased sodium, decreased magnesium, rash, decreased appetite, COVID-19 infection, and headache.

Adverse reactions and laboratory abnormalities in INAVO120 are summarized in Table 3 and Table 4, respectively. Patient-reported symptoms are summarized in Table 5.

**Table 3: Adverse Reactions ( $\geq 10\%$  with  $\geq 5\%$  [All Grades] or  $\geq 2\%$  [Grade 3-4] Higher Incidence in the ITOVEBI Arm) in INAVO120**

Adverse Reaction	ITOVEBI + Palbociclib + Fulvestrant N=162		Placebo + Palbociclib + Fulvestrant N=162	
	All Grades (%)	Grade 3-4 (%)	All Grades (%)	Grade 3-4 (%)
<b>Gastrointestinal Disorders</b>				
Stomatitis <sup>a</sup>	51	6*	27	0
Diarrhea	48	3.7*	16	0
Nausea	28	0.6*	17	0
Vomiting	15	0.6*	5	1.2*
<b>General Disorders and Administration Site Conditions</b>				
Fatigue	38	1.9*	25	1.2*
<b>Skin and Subcutaneous Tissue Disorders</b>				
Rash <sup>b</sup>	26	0	19	0
Alopecia	19	0	6	0
Dry skin <sup>c</sup>	13	0	4.3	0
<b>Metabolism and Nutrition Disorders</b>				
Decreased appetite	24	0	9	0
<b>Infections and Infestations</b>				

Adverse Reaction	ITOVEBI + Palbociclib + Fulvestrant N=162		Placebo + Palbociclib + Fulvestrant N=162	
	All Grades (%)	Grade 3-4 (%)	All Grades (%)	Grade 3-4 (%)
COVID-19 infection	23	1.9	10	0.6
Urinary tract infection <sup>b</sup>	15	1.2*	9	0
<b>Nervous System Disorders</b>				
Headache <sup>b</sup>	22	0	14	0
<b>Investigations</b>				
Decreased weight	17	3.7*	0.6	0
* No Grade 4 adverse reactions were observed.				
<sup>a</sup> Includes aphthous ulcer, glossitis, glossodynia, lip ulceration, mouth ulceration, mucosal inflammation, and stomatitis.				
<sup>b</sup> Includes other related terms.				
<sup>c</sup> Includes dry skin, skin fissures, xerosis, and xeroderma.				

Clinically relevant adverse reactions occurring in < 10% of patients who received ITOVEBI in combination with palbociclib and fulvestrant included abdominal pain, dry eye, dysgeusia, and dyspepsia.

**Table 4: Select Laboratory Abnormalities (≥ 10% with a ≥ 2% [All Grades or Grade 3-4] Higher Incidence in the ITOVEBI Arm) in INAVO120**

Laboratory Abnormality	ITOVEBI + Palbociclib + Fulvestrant <sup>a</sup>		Placebo + Palbociclib + Fulvestrant <sup>b</sup>	
	All Grades (%)	Grade 3-4 (%)	All Grades (%)	Grade 3-4 (%)
<b>Hematology</b>				
Neutrophils (total, absolute) decreased	95	82	97	79
Hemoglobin decreased	88	8*	85	2.5*
Platelets decreased	84	16	71	3.7
Lymphocytes (absolute) decreased	72	9	68	14
<b>Chemistry</b>				
Glucose (fasting) increased <sup>c</sup>	85	12	43	0
Calcium decreased	42	3.1	32	3.7
Potassium decreased	38	6	21	0.6*
Creatinine increased	38	1.9*	30	1.2*
ALT increased	34	3.1*	29	1.2*
Sodium decreased	28	2.5*	19	2.5
Magnesium decreased	27	0.6	21	0
Lipase (fasting) increased	16	1.4*	7	0
ALT = alanine aminotransferase				
* No Grade 4 laboratory abnormalities were observed.				
<sup>a</sup> The denominator used to calculate the rate varied from 122 to 160 based on the number of patients with a baseline value and at least one post-treatment value.				
<sup>b</sup> The denominator used to calculate the rate varied from 131 to 161 based on the number of patients with a baseline value and at least one post-treatment value.				

Laboratory Abnormality	ITOVEBI + Palbociclib + Fulvestrant <sup>a</sup>		Placebo + Palbociclib + Fulvestrant <sup>b</sup>	
	All Grades (%)	Grade 3-4 (%)	All Grades (%)	Grade 3-4 (%)
<sup>c</sup> Grading according to CTCAE version 4.03.				

In INAVO120, patient-reported symptomatic toxicities (i.e., diarrhea, nausea, vomiting, fatigue, mouth sores, decreased appetite, and rash) were assessed via the Patient-Reported Outcomes – Common Terminology Criteria for Adverse Events (PRO-CTCAE) at baseline, every two weeks through Cycle 3 Day 15, and then Day 1 of every other 28-day cycle until treatment discontinuation.

Completion rates in both arms were > 90% at baseline and > 80% at subsequent time points where > 50% of randomized patients were on treatment.

**Table 5: Patient-Reported Symptoms Assessed by PRO-CTCAE in INAVO120**

Symptom (Attribute) <sup>a</sup>	Any Symptom Before Treatment (%) <sup>b</sup>		Any Worsening on Treatment (%) <sup>c</sup>		Worsening to Score 3 or 4 (%) <sup>d</sup>	
	ITOVEBI + P + F (N=148) <sup>e</sup>	Placebo + P + F (N=152) <sup>e</sup>	ITOVEBI + P + F (N=148) <sup>e</sup>	Placebo + P + F (N=152) <sup>e</sup>	ITOVEBI + P + F (N=148) <sup>e</sup>	Placebo + P + F (N=152) <sup>e</sup>
Diarrhea (frequency), %	23	15	78	49	32	8
Nausea (frequency), %	21	21	59	50	20	11
Vomiting (frequency), %	9	6	35	26	6	3.3
Fatigue (severity), %	72	69	72	58	32	22
Mouth sores (severity), %	11	14	74	52	30	9
Decreased appetite (severity), %	38	28	78	55	26	12
Symptom (Attribute)	Baseline Presence		Post-baseline Presence			
	ITOVEBI + P + F (N=148)	Placebo + P + F (N=152)	ITOVEBI + P + F (N=148)		Placebo + P + F (N=152)	
Rash (yes), %	5	5	50		38	
ITOVEBI+P+F = ITOVEBI with palbociclib and fulvestrant arm; Placebo+P+F = placebo with palbociclib and fulvestrant arm. <sup>a</sup> The symptom attribute scoring is defined by amount/frequency/severity with a score of 0 = ‘not at all’/‘never’/‘none’; 1 = ‘a little bit’/‘rarely’/‘mild’; 2 = ‘somewhat’/‘occasionally’/‘moderate’; 3 = ‘quite a bit’/‘frequently’/‘severe’; 4 = ‘very much’/‘almost constantly’/‘very severe’. <sup>b</sup> The percentage of patients whose symptom score before treatment was 1-4. <sup>c</sup> The percentage of patients whose symptom score increased during treatment, with respect to their score before treatment. <sup>d</sup> The percentage of patients whose symptom score increased to 3 or 4 during treatment, with respect to their score before treatment. <sup>e</sup> The number of patients who provided a score before treatment and at least one on-treatment score.						

Patient-reported overall side-effect impact was assessed using the Modified Bother Item (MBI). Patients provided a response to “I am bothered by side effects of treatment,” and at baseline the proportion of patients

with MBI responses of “not at all” were 70% in the ITOVEBI with palbociclib and fulvestrant arm and 76% in the placebo with palbociclib and fulvestrant arm. At Cycle 2 Day 15, the proportion of patients with MBI responses of “not at all” were 25% in the ITOVEBI with palbociclib and fulvestrant arm and 53% in the placebo with palbociclib and fulvestrant arm. Through 31 cycles of treatment, patients in the ITOVEBI with palbociclib and fulvestrant arm reported more side effect bother compared to the placebo with palbociclib and fulvestrant arm.

## **8 USE IN SPECIFIC POPULATIONS**

### **8.1 Pregnancy**

#### Risk Summary

ITOVEBI is used in combination with palbociclib and fulvestrant. Refer to the Full Prescribing Information of palbociclib and fulvestrant for pregnancy information.

Based on animal data and its mechanism of action, ITOVEBI can cause fetal harm when administered to a pregnant woman [*see Clinical Pharmacology (12.1)*]. There are no available data on the use of ITOVEBI in pregnant women to inform a drug-associated risk. In an animal reproduction study, oral administration of inavolisib to pregnant rats during the period of organogenesis caused adverse developmental outcomes, including embryo-fetal mortality, structural abnormalities, and alterations to growth at maternal exposures approximately equivalent to the human exposure at the recommended dose of 9 mg/day based on AUC (*see Data*). Advise pregnant women and females of reproductive potential of the potential risk to a fetus.

The background risk of major birth defects and miscarriage for the indicated population is unknown. In the U.S. general population, the estimated background risk of major birth defects is 2% to 4% and of miscarriage is 15% to 20% of clinically recognized pregnancies in the U.S. general population.

#### Data

##### *Animal Data*

In an embryo-fetal development study, pregnant rats received oral doses of inavolisib up to 6 mg/kg/day during the period of organogenesis. Administration of doses  $\geq 2$  mg/kg/day resulted in decreases in fetal body weight and placental weight, post-implantation loss, lower fetal viability, fetal malformations (including kyphosis of vertebral column, fused thoracic arch, microphthalmia) and variations (including dilated renal pelvis, short supernumerary rib, wavy rib). At a dose of 2 mg/kg/day, maternal exposures were 0.9 times the human exposure at the recommended dose of 9 mg/day based on AUC.

### **8.2 Lactation**

#### Risk Summary

ITOVEBI is used in combination with palbociclib and fulvestrant. Refer to the Full Prescribing Information of palbociclib and fulvestrant for lactation information.

There are no data on the presence of inavolisib or its metabolites in human milk, its effects on milk production or a breastfed child. Because of the potential for serious adverse reactions in a breastfed child, advise lactating women to not breastfeed during treatment with ITOVEBI and for 1 week after the last dose.

### **8.3 Females and Males of Reproductive Potential**

ITOVEBI is used in combination with palbociclib and fulvestrant. Refer to the Full Prescribing Information of palbociclib and fulvestrant for contraception and infertility information.

ITOVEBI can cause fetal harm when administered to a pregnant woman [*see Use in Specific Populations (8.1)*].

#### Pregnancy Testing

Verify pregnancy status in females of reproductive potential prior to initiating treatment with ITOVEBI.

#### Contraception

## Females

Advise females of reproductive potential to use effective non-hormonal contraception during treatment with ITOVEBI and for 1 week after the last dose.

## Males

Advise male patients with female partners of reproductive potential to use effective contraception during treatment with ITOVEBI and for 1 week after the last dose.

## Infertility

Based on animal studies, ITOVEBI may impair fertility in females and males of reproductive potential [see *Nonclinical Toxicology (13.1)*].

## 8.4 Pediatric Use

The safety and efficacy of ITOVEBI in pediatric patients have not been established.

## 8.5 Geriatric Use

Of the 162 patients who received ITOVEBI in INAVO120, 15% were  $\geq 65$  years of age, and 3% were  $\geq 75$  years of age.

Dosage modifications or interruptions of ITOVEBI due to adverse reactions occurred at a higher incidence for patients  $\geq 65$  years of age compared to younger patients (79% versus 68%, respectively).

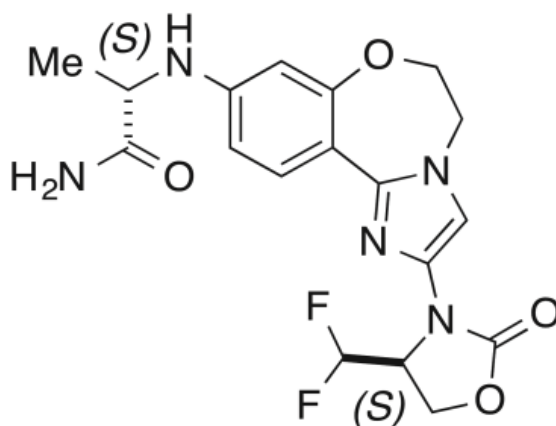
Clinical studies of ITOVEBI did not include sufficient numbers of patients  $\geq 65$  years of age to determine whether they respond differently from younger patients.

## 8.6 Renal Impairment

Reduce the dosage in patients with moderate renal impairment (eGFR 30 to  $< 60$  mL/min based on CKD-EPI) [see *Dosage and Administration (2.5)*]. No dosage modification is recommended in patients with mild renal impairment (eGFR 60 to  $< 90$  mL/min). ITOVEBI has not been evaluated in patients with severe renal impairment (eGFR  $< 30$  mL/min).

## 11 DESCRIPTION

ITOVEBI contains inavolisib, a kinase inhibitor. The chemical name of inavolisib is (2S)-2-[[[2-[(4S)-4-(difluoromethyl)-2-oxo-oxazolidin-3-yl]-5,6-dihydroimidazo[1,2-d][1,4]benzoxazepin-9-yl]amino]propanamide. Inavolisib is a white to off-white, greyish pink, greyish orange, or greyish yellow powder or powder with lumps. Inavolisib demonstrates pH-dependent aqueous solubility; the greatest solubility is at low pH, and solubility decreases with increasing pH. The molecular formula for inavolisib is  $C_{18}H_{19}F_2N_5O_4$  and the molecular weight is 407.37 g/mol. The chemical structure of inavolisib is shown below:



ITOVEBI film-coated tablets are supplied for oral administration with two strengths that contain 3 mg and 9 mg of inavolisib. The tablets also contain lactose, magnesium stearate, microcrystalline cellulose, and sodium

starch glycolate. The film-coating contains the following inactive ingredients: polyvinyl alcohol (partially hydrolyzed), titanium dioxide, macrogol/polyethylene glycol, talc, iron oxide red, and iron oxide yellow (in the 9 mg tablet only).

## **12 CLINICAL PHARMACOLOGY**

### **12.1 Mechanism of Action**

Inavolisib is an inhibitor of phosphatidylinositol 3-kinase (PI3K) with inhibitory activity predominantly against PI3K $\alpha$ . In vitro, inavolisib induced the degradation of mutated PI3K catalytic alpha subunit p110 $\alpha$  (encoded by the *PIK3CA* gene), inhibited phosphorylation of the downstream target AKT, reduced cellular proliferation, and induced apoptosis in *PIK3CA*-mutated breast cancer cell lines. In vivo, inavolisib reduced tumor growth in *PIK3CA*-mutated, estrogen receptor-positive, breast cancer xenograft models. The combination of inavolisib with palbociclib and fulvestrant increased tumor growth inhibition compared to each treatment alone or the doublet combinations.

### **12.2 Pharmacodynamics**

#### Exposure-Response Relationships

The exposure-response relationship for the efficacy of inavolisib has not been fully characterized. Inavolisib time course of pharmacodynamic response is unknown. Higher systemic exposure of inavolisib was associated with higher incidence of Grade  $\geq 2$  anemia, Grade  $\geq 2$  hyperglycemia, and inavolisib dosage modifications due to adverse reactions.

#### Cardiac Electrophysiology

At the recommended approved dosage, a mean increase in the QTc interval of  $> 20$  ms is unlikely.

### **12.3 Pharmacokinetics**

Inavolisib pharmacokinetics are presented as geometric mean (geometric coefficient of variation [geo CV]%) following administration of the approved recommended dosage unless otherwise specified. The inavolisib steady-state AUC is 1,010 h\*ng/mL (25%) and  $C_{\max}$  is 69 ng/mL (27%). Steady-state concentrations are predicted to be attained by day 5.

Inavolisib accumulation is approximately 2-fold.

Inavolisib steady-state AUC is proportional with dose from 6 to 12 mg (0.7 to 1.3 times the approved recommended dosage).

#### Absorption

Inavolisib absolute oral bioavailability is 76%. Inavolisib steady-state median (min, max) time to maximum plasma concentration ( $T_{\max}$ ) is 3 hours (0.5, 4 hours).

#### *Effect of Food*

No clinically significant differences in inavolisib pharmacokinetics were observed following administration of inavolisib with a high-fat meal (approximately 1,000 calories, 50% fat).

#### Distribution

Inavolisib apparent (oral) volume of distribution is 155 L (26%). Inavolisib plasma protein binding is 37% and is not concentration-dependent in vitro. Inavolisib blood-to-plasma ratio is 0.8.

#### Elimination

Inavolisib elimination half-life is 15 hours (24%) with a total clearance of 8.8 L/hr (29%).

#### *Metabolism*

Inavolisib is primarily metabolized by hydrolysis. In vitro, inavolisib was minimally metabolized by CYP3A.



## *Excretion*

Following oral administration of a single radiolabeled dose, 49% of the administered dose was recovered in urine (40% unchanged) and 48% in feces (11% unchanged).

## Specific Populations

No clinically significant differences in the pharmacokinetics of inavolisib were observed based on age (27 to 85 years), sex, race (Asian or White), body weight (39 to 159 kg), or mild hepatic impairment (total bilirubin > ULN to  $\leq 1.5 \times$  ULN or AST > ULN and total bilirubin  $\leq$  ULN). The effect of moderate to severe hepatic impairment on inavolisib pharmacokinetics is unknown.

## *Patients with Renal Impairment*

Inavolisib AUC was 73% higher in patients with moderate renal impairment compared to patients with normal renal function (eGFR  $\geq 90$  mL/min).

No clinically significant differences in the pharmacokinetics of inavolisib were observed in patients with mild renal impairment compared to patients with normal renal function. The effect of severe renal impairment (eGFR < 30 mL/min) on the pharmacokinetics of inavolisib is unknown.

## Drug Interaction Studies

### *Clinical Studies and Model-Informed Approaches*

**Proton Pump Inhibitors:** No clinically significant difference in steady-state inavolisib pharmacokinetics were observed based upon concomitant use of a proton pump inhibitor (lansoprazole, omeprazole, esomeprazole, pantoprazole, or rabeprazole).

### *In Vitro Studies*

**CYP450 Enzymes:** Inavolisib induces CYP3A and CYP2B6. Inavolisib is a time-dependent inhibitor of CYP3A. Inavolisib does not inhibit CYP1A2, CYP2B6, CYP2C8, CYP2C9, CYP2C19, or CYP2D6.

**Transporter Systems:** Inavolisib is a substrate of P-glycoprotein (P-gp) and breast cancer resistance protein (BCRP), but is not a substrate of OATP1B1, OATP1B3, OCT1, OCT2, MATE1, MATE2K, OAT1, OAT2. Inavolisib does not inhibit P-gp, BCRP, OATP1B1, OATP1B3, OCT1, OCT2, OAT1, OAT3, MATE1, or MATE2K.

## **13 NONCLINICAL TOXICOLOGY**

### **13.1 Carcinogenesis, Mutagenesis, Impairment of Fertility**

Carcinogenicity studies with inavolisib have not been conducted.

Inavolisib was not mutagenic in the bacterial reverse mutation (Ames) assay. Inavolisib was clastogenic in an in vitro human lymphocyte micronucleus assay. Inavolisib was not genotoxic in an in vivo rat bone marrow micronucleus test and did not induce DNA break in a liver comet assay.

Fertility studies with inavolisib have not been conducted. In repeat-dose toxicity studies, inavolisib was administered orally once daily for up to 3 months duration in rats and dogs.

In male rats, dose-dependent atrophy of the prostate and seminal vesicle and decreased organ weights of the prostate, seminal vesicle, epididymis and testis were observed at doses  $\geq 1.5$  mg/kg/day ( $\geq 0.4$  times the human exposure at the recommended dose of 9 mg/day based on AUC). In male dogs, focal inspissation of seminiferous tubule contents and multinucleated spermatids in the testis and epithelial degeneration/necrosis in the epididymis were observed following 4 weeks of dosing at  $\geq 1.5$  mg/kg/day ( $\geq 2$  times the human exposure at the recommended dose of 9 mg/day based on AUC) and decreased sperm count was observed following 3 months of dosing at  $\geq 1$  mg/kg/day ( $\geq 1.2$  times the human exposure at the recommended dose of 9 mg/day based on AUC). Findings in dogs were not observed following a recovery period.

In female rats, atrophy in the uterus and vagina, decreased ovarian follicles, and findings suggestive of an interruption/alteration of the estrous cycle were observed following up to 3 months of dosing at doses  $\geq 3$  mg/kg/day ( $\geq 1.2$  times the human exposure at the recommended dose of 9 mg/day based on AUC). Findings in the uterus, vagina, and estrous cycle observed in the 4-week toxicity study were not observed following recovery. Recovery was not assessed in the 3-month study in rats.

### 13.2 Animal Toxicology and/or Pharmacology

Lens degeneration, characterized by lens fiber swelling, separation of lens fibers, and/or accumulation of subcapsular proteinaceous material, was observed in rats at an oral inavolisib dose of 10 mg/kg/day (6.3 times the human exposure at the recommended dose of 9 mg/day based on AUC). In dogs, lens fiber swelling and lens cortex vacuolation were observed at oral inavolisib doses  $\geq 0.3$  mg/kg/day ( $\geq 0.5$  times the human exposure at the recommended dose based on AUC) and  $\geq 1$  mg/kg/day ( $\geq 1.2$  times the human exposure at the recommended dose based on AUC), respectively. Lens degeneration was present in rats following a 4-week recovery period but was not present in dogs following a 12-week recovery period.

## 14 CLINICAL STUDIES

### 14.1 Locally Advanced or Metastatic Breast Cancer

#### INAVO120

INAVO120 (NCT04191499) was a randomized (1:1), double-blind, placebo-controlled trial evaluating the efficacy of ITOVEBI in combination with palbociclib and fulvestrant in adult patients with endocrine-resistant *PIK3CA*-mutated, HR-positive, HER2-negative (defined as IHC 0 or 1+, or IHC 2+/ISH-), locally advanced or metastatic breast cancer whose disease progressed during or within 12 months of completing adjuvant endocrine therapy and who have not received prior systemic therapy for locally advanced or metastatic disease.

Randomization was stratified by presence of visceral disease (yes or no), endocrine resistance (primary or secondary), and geographic region (North America/Western Europe, Asia, other).

Primary endocrine resistance was defined as relapse while on the first 2 years of adjuvant endocrine therapy (ET) and secondary endocrine resistance was defined as relapse while on adjuvant ET after at least 2 years or relapse within 12 months of completing adjuvant ET.

Patients were required to have HbA<sub>1c</sub> < 6% and fasting blood glucose < 126 mg/dL. The study excluded patients with Type 1 diabetes mellitus or Type 2 diabetes mellitus requiring ongoing anti-hyperglycemic treatment at the start of study treatment.

*PIK3CA* mutation status was prospectively determined in a central laboratory using the FoundationOne® Liquid CDx assay on plasma-derived circulating tumor DNA (ctDNA) or in local laboratories using various validated polymerase chain reaction (PCR) or next-generation sequencing (NGS) assays on tumor tissue or plasma. All patients were required to provide both a freshly collected pre-treatment blood sample and a tumor tissue sample for central evaluation and determination of *PIK3CA* mutation(s) status.

Patients received either ITOVEBI 9 mg (n=161) or placebo (n=164) orally once daily, in combination with palbociclib 125 mg orally once daily for 21 consecutive days followed by 7 days off treatment to comprise a cycle of 28 days, and fulvestrant 500 mg administered intramuscularly on Cycle 1, Days 1 and 15, and then on Day 1 of every 28-day cycle. Patients received treatment until disease progression or unacceptable toxicity. In addition, all pre/perimenopausal women and men received an LHRH agonist throughout therapy.

The baseline demographic and disease characteristics were: median age 54 years (range: 27 to 79 years); 98% female, of which 39% were pre/perimenopausal; 59% White, 38% Asian, 2.5% unknown, 0.6% Black or African American; 6% Hispanic or Latino; and Eastern Cooperative Oncology Group (ECOG) performance status of 0 (63%) or 1 (36%). Tamoxifen (57%) and aromatase inhibitors (50%) were the most commonly used adjuvant endocrine therapies. Sixty-four percent of patients were considered to have secondary endocrine resistance. Eighty-three percent of patients had received prior chemotherapy (in the neo/adjuvant setting) and 1.2% of patients had been treated with a CDK4/6 inhibitor.

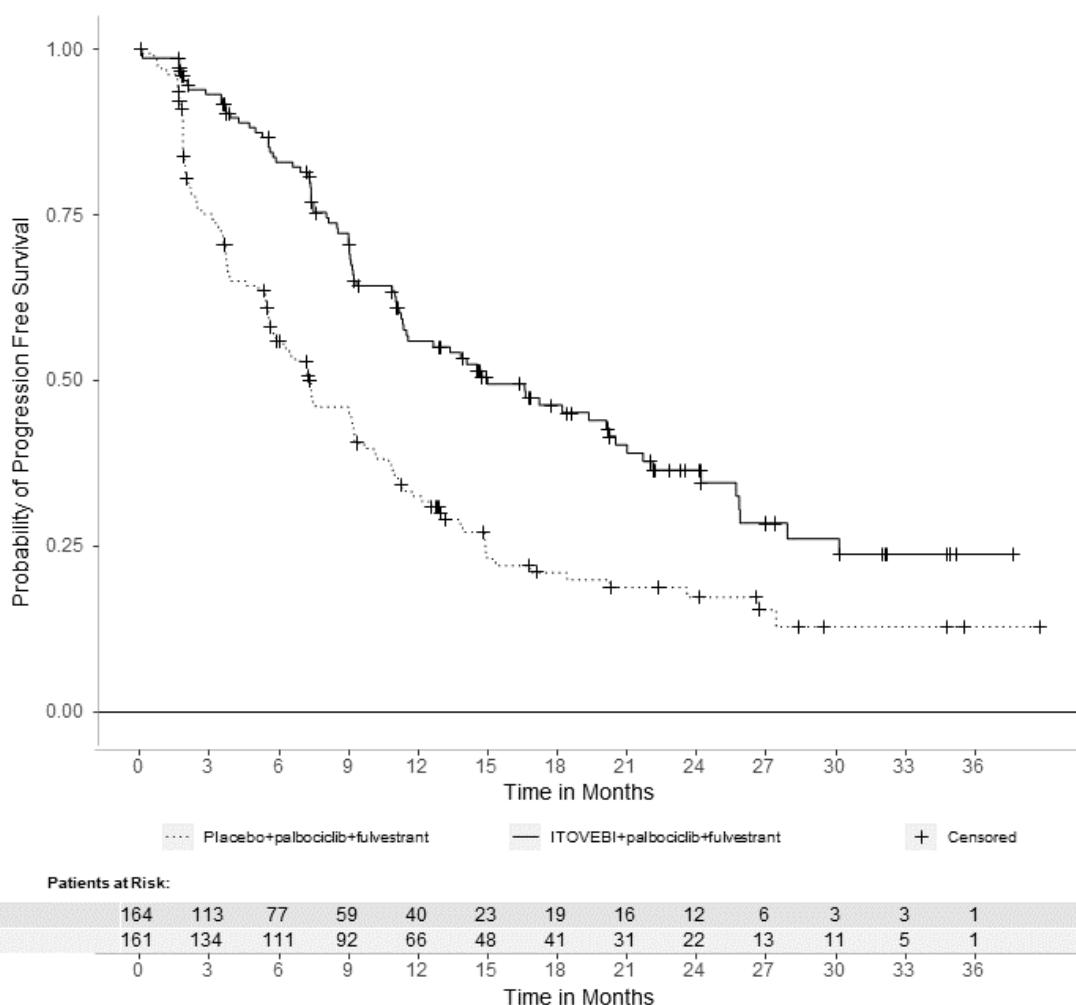
The major efficacy outcome measure was investigator (INV)-assessed progression-free survival (PFS) per Response Evaluation Criteria in Solid Tumors (RECIST) version 1.1. Additional efficacy outcome measures included overall survival (OS), INV-assessed objective response rate (ORR), and INV-assessed duration of response (DOR).

Efficacy results are summarized in Table 6 and Figure 1. INV-assessed PFS results were supported by consistent results from a blinded independent central review (BICR) assessment. At the time of the PFS analysis, OS data were not mature with 30% deaths in the overall population.

**Table 6: Efficacy Results in Patients with Locally Advanced or Metastatic Breast Cancer in INAVO120**

Efficacy Endpoint	ITOVEBI + Palbociclib + Fulvestrant N=161	Placebo + Palbociclib + Fulvestrant N=164
Progression-Free Survival <sup>a,b</sup>		
Patients with event, n (%)	82 (51)	113 (69)
Median, months (95% CI)	15.0 (11.3, 20.5)	7.3 (5.6, 9.3)
Hazard ratio (95% CI)	0.43 (0.32, 0.59)	
p-value	< 0.0001	
Objective Response Rate <sup>a,b,c</sup>		
Patients with CR or PR, n (%)	94 (58)	41 (25)
95% CI	(50, 66)	(19, 32)
Duration of Response <sup>b</sup>		
Median DOR, months (95% CI)	18.4 (10.4, 22.2)	9.6 (7.4, 16.6)
CI = confidence interval; CR = complete response; DOR = duration of response; PR = partial response		
<sup>a</sup> Per RECIST version 1.1.		
<sup>b</sup> Based on investigator assessment.		
<sup>c</sup> Based on confirmed ORR.		

**Figure 1: Kaplan-Meier Curve for Investigator-Assessed Progression-Free Survival in INAVO120**



## 16 HOW SUPPLIED/STORAGE AND HANDLING

ITOVEBI is supplied in the following strengths and package configurations:

Package Configuration	Tablet Strength	NDC	Tablet Description
Bottle of 28 tablets	3 mg	50242-084-08	Red and round convex-shaped with an “INA 3” debossing on one side
Bottle of 28 tablets	9 mg	50242-079-08	Pink and oval-shaped with an “INA 9” debossing on one side

Store at 20°C to 25°C (68°F to 77°F), excursions permitted between 15°C and 30°C (between 59°F and 86°F) [see USP Controlled Room Temperature].

## 17 PATIENT COUNSELING INFORMATION

Advise the patient to read the FDA-approved patient labeling (Patient Information).

### Hyperglycemia

Advise patients that ITOVEBI may cause hyperglycemia and the need to monitor fasting glucose levels periodically during therapy. Advise patients to contact their healthcare provider immediately for signs and symptoms of hyperglycemia (e.g., excessive thirst, urinating more often, blurred vision, mental confusion, difficulty breathing, or increased appetite with weight loss) [see *Warnings and Precautions* (5.1)].

### Stomatitis

Advise patients that ITOVEBI may cause stomatitis, which may be severe, and to notify their healthcare provider if they develop symptoms of stomatitis (e.g., painful redness, swelling, or sores in the mouth) [*see Warnings and Precautions (5.2)*].

### Diarrhea

Advise patients that ITOVEBI may cause diarrhea, which may be severe, and to start antidiarrheal treatment, increase oral fluids, and notify their healthcare provider if diarrhea occurs while taking ITOVEBI [*see Warnings and Precautions (5.3)*].

### Embryo-Fetal Toxicity

- Inform pregnant women and females of reproductive potential of the potential risk to a fetus. Advise females to inform their healthcare provider of a known or suspected pregnancy [*see Warnings and Precautions (5.4) and Use in Specific Populations (8.1)*].
- Advise females of reproductive potential to use effective non-hormonal contraception during treatment with ITOVEBI and for 1 week after the last dose [*see Use in Specific Populations (8.3)*].
- Advise male patients with female partners of reproductive potential to use effective contraception during treatment with ITOVEBI and for 1 week after the last dose [*see Use in Specific Populations (8.3)*].
- Refer to the Full Prescribing Information of palbociclib and fulvestrant for pregnancy and contraception information.

### Lactation

Advise women not to breastfeed during treatment with ITOVEBI and for 1 week after the last dose [*see Use in Specific Populations (8.2)*]. Refer to the Full Prescribing Information of palbociclib and fulvestrant for lactation information.

### Infertility

Advise females and males of reproductive potential that ITOVEBI may impair fertility [*see Use in Specific Populations (8.3)*]. Refer to the Full Prescribing Information of palbociclib and fulvestrant for infertility information.

### Dosing

- Instruct patients to take ITOVEBI at approximately the same time each day [*see Dosage and Administration (2.3)*].
- Instruct patients that if a dose of ITOVEBI is missed, to take the missed dose as soon as possible within 9 hours. After more than 9 hours, skip the dose and take the next dose at the scheduled time [*see Dosage and Administration (2.3)*].
- Instruct patients that if vomiting occurs after taking the ITOVEBI dose, do not take an additional dose on that day. Resume the usual dosing schedule the next day [*see Dosage and Administration (2.3)*].

Distributed by:

**Genentech USA, Inc.**

A Member of the Roche Group

1 DNA Way

South San Francisco, CA 94080-4990

ITOVEBI is a trademark of Genentech, Inc.

©2024 Genentech, Inc. All rights reserved.

**PATIENT INFORMATION**  
ITOVEBI™ (eye-TOVE-bee)  
(inavolisib)  
tablets, for oral use

**Important: ITOVEBI is used with palbociclib and fulvestrant. You should also read the Patient Information that comes with palbociclib and fulvestrant.**

**What is ITOVEBI?**

ITOVEBI is a prescription medicine used in combination with the medicines palbociclib and fulvestrant to treat adults who have hormone receptor (HR)-positive, human epidermal growth factor receptor 2 (HER2)-negative breast cancer that has an abnormal phosphatidylinositol-3-kinase catalytic subunit alpha (*PIK3CA*) gene, and has spread to nearby tissue or lymph nodes (locally advanced), or to other parts of the body (metastatic), and has come back after hormone (endocrine) therapy.

Your healthcare provider will test your cancer for abnormal *PIK3CA* genes to make sure that ITOVEBI is right for you. It is not known if ITOVEBI is safe and effective in children.

**Before you take ITOVEBI, tell your healthcare provider about all of your medical conditions, including if you:**

- have a history of diabetes or high blood sugar.
- have kidney problems.
- are pregnant or plan to become pregnant. ITOVEBI can harm your unborn baby.

**Females who are able to become pregnant:**

- Your healthcare provider will check to see if you are pregnant before you start treatment with ITOVEBI.
- You should use effective non-hormonal birth control (contraception) during treatment with ITOVEBI and for 1 week after your last dose. Talk to your healthcare provider about what birth control method is right for you during this time.
- Tell your healthcare provider right away if you become pregnant or think you may be pregnant during treatment with ITOVEBI.

**Males with female partners who are able to become pregnant:**

- You should use effective birth control (contraception) during treatment with ITOVEBI and for 1 week after your last dose.
- are breastfeeding or plan to breastfeed. It is not known if ITOVEBI passes into your breastmilk. Do not breastfeed during treatment with ITOVEBI and for 1 week after your last dose. Talk to your healthcare provider about the best way to feed your baby during treatment with ITOVEBI.

**Tell your healthcare provider about all the medicines you take**, including prescription and over-the-counter medicines, vitamins, and herbal supplements.

**How should I take ITOVEBI?**

- Take ITOVEBI exactly as your healthcare provider tells you to take it.
- Do not change your dose or stop taking ITOVEBI unless your healthcare provider tells you.
- Take ITOVEBI 1 time each day, at about the same time each day.
- Take ITOVEBI with or without food.
- Swallow ITOVEBI tablet(s) whole. Do not chew, crush, or split the tablet(s).
- If you miss a dose of ITOVEBI, you may still take your missed dose within 9 hours from the time you usually take it. If it has been more than 9 hours after you usually take your dose, skip the dose for that day. The next day, take the dose at your usual time.
- If you vomit after taking a dose of ITOVEBI, do not take an extra dose on that day. Take your regular dose of ITOVEBI at your usual time the next day.
- For women who have not reached menopause or are just starting menopause, your healthcare provider will prescribe a medicine called luteinizing hormone-releasing hormone (LHRH) agonist. For men, your healthcare provider may prescribe a LHRH agonist.

**What are the possible side effects of ITOVEBI?**

**ITOVEBI may cause serious side effects, including:**

- **High blood sugar levels (hyperglycemia).** High blood sugar is common with ITOVEBI and may be severe. Your healthcare provider will monitor your blood sugar levels before you start and during treatment with ITOVEBI. Your blood sugar levels may be monitored more often if you have a history of Type 2 diabetes. Your healthcare provider may also ask you to self-monitor and report your blood sugar levels at home. This will be required more frequently in the first 4 weeks of treatment. If you are not sure how to test your blood sugar levels, talk to your healthcare provider. You should stay well-hydrated during treatment with ITOVEBI.  
Tell your healthcare provider right away if you develop symptoms of high blood sugar, including:

